

Astore Keymak

a member of the **Hudaco** group

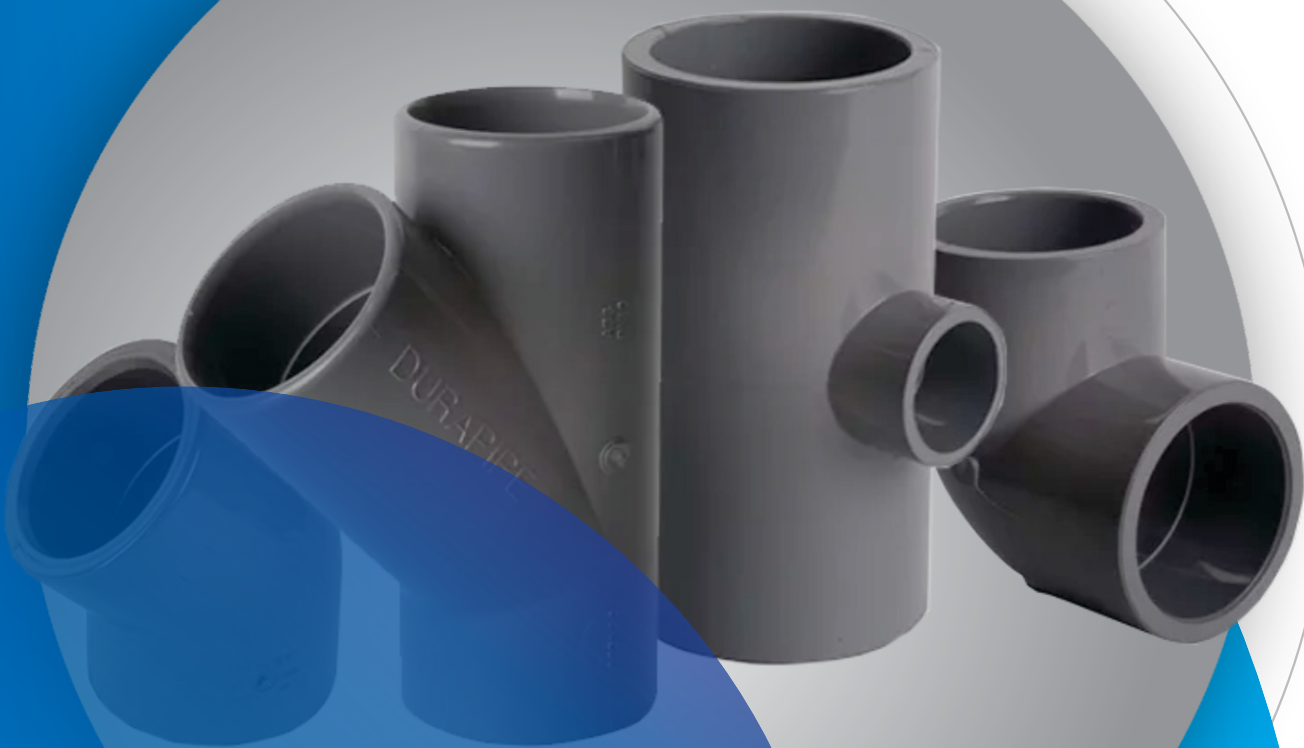
“Driven by quality; Delivered by experience!”



CATALOGUE

SUPERFLO

ABS RANGE



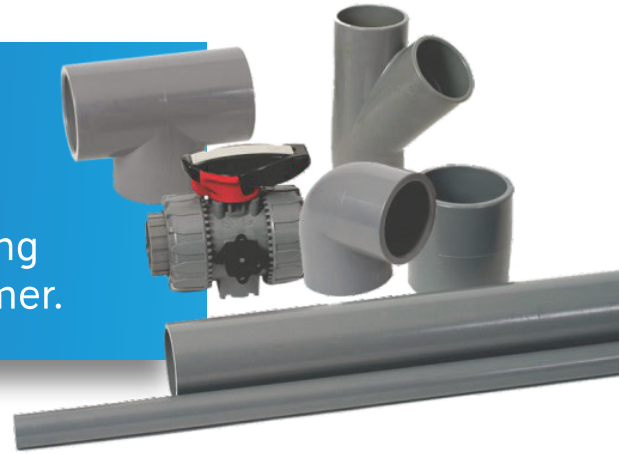
Did you know?

That ABS is the only Thermoplastic
that can handle temperatures
@ -40 Degree Celcius!

ACRYLONITRILE BUTADIENE STYRENE

ABS

Series of fittings designed for conveying fluids under pressure with a cold chemical weld jointing system (solvent welding) using a suitable solvent cement and cleaner primer.



ABS combines numerous performance and economic benefits which make it the ideal solution when there is a requirement for a pipe system to convey fluids at pressure. ABS is a copolymer of Acrylonitrile Butadiene Styrene, blended, to give unrivalled properties and benefits over traditional pipework materials such as copper or steel. Acrylonitrile imparts chemical resistance ensuring the pipework does not corrode or scale. The Butadiene content endows the material with impact strength and toughness, particularly at low temperatures, while the Styrene content contributes to lustre, hence the extremely smooth bores, and ensures the strength of the material.

ABS provides a wide temperature range between -40°C to 70°C and the system remains extremely ductile.

ABS is extremely lightweight and is much easier to handle on-site than traditional materials especially during installation which can significantly reduce both time and cost.

Full series of fittings from $\text{Ø } 3/8''$ to $\text{Ø } 8''$
(Imperial)

Full series of fittings from $\text{Ø } 16\text{mm}$ to $\text{Ø } 315\text{mm}$
(Metric)

Pressure Rated
PN16 – PN4

ABS PIPES & FITTINGS - PN10



PIPE 10 BAR 5 METRE LENGTHS	
ABSP	
dia	CODE
16	ABSP0016100
20	ABSP0020100
25	ABSP0025100
32	ABSP0032100
40	ABSP0040100
50	ABSP0050100
63	ABSP0063100
75	ABSP0075100
90	ABSP0090100
110	ABSP0110100
125	ABSP0125100
140	ABSP0140100
160	ABSP0160100
200	ABSP0200100
225	ABSP0225100
250	ABSP0250100
315	ABSP0315100

90°BENDS	
ABSF CU1	
dia	CODE
20	ABSF CU10020
25	ABSF CU10025
32	ABSF CU10032
40	ABSF CU10040
50	ABSF CU10050
63	ABSF CU10063
75	ABSF CU10075
90	ABSF CU10090
110	ABSF CU10110

EQUAL TEE PLAIN	
ABSF TI1	
dia	CODE
16	ABSF TI10016
20	ABSF TI10020
25	ABSF TI10025
32	ABSF TI10032
40	ABSF TI10040
50	ABSF TI10050
63	ABSF TI10063
75	ABSF TI10075
90	ABSF TI10090
110	ABSF TI10110
125	ABSF TI10125
140	ABSF TI10140
160	ABSF TI10160
200	ABSF TI10200
225	ABSF TI10225
250	ABSF TI10250
315	ABSF TI10315

45°PLAIN TEE	
ABSF TY1	
dia	CODE
20	ABSF TY10020
25	ABSF TY10025
32	ABSF TY10032
40	ABSF TY10040
50	ABSF TY10050
63	ABSF TY10063

REDUCING SOCKET	
ABSF MR1	
dia	CODE
25 x 20 x 16	ABSFMR1002500200016
32 x 25 x 20	ABSFMR1003200250020
40 x 32 x 25	ABSFMR1004000320025
50 x 40 x 32	ABSFMR1005000400032
63 x 50 x 40	ABSFMR1006300500040
75 x 63 x 50	ABSFMR1007500630050
90 x 75 x 63	ABSFMR1009000750063
110 x 90 x 75	ABSFMR1011000900075
125 x 110 x 90	ABSFMR1012501100090
140 x 125 x 110	ABSFMR1014001250110
160 x 140 x 125	ABSFMR1016001400125
200 x 160 x 140	ABSFMR1020001600140
225 x 200 x 160	ABSFMR1022502000160

REDUCING BUSHES PLAIN	
ABSF RC1	
dia	CODE
20 x 16	ABSFRC100200016
25 x 20	ABSFRC100250020
32 x 16	ABSFRC100320016
32 x 25	ABSFRC100320025
40 x 32	ABSFRC100400032
50 x 25	ABSFRC100500025
50 x 32	ABSFRC100500032
50 x 40	ABSFRC100500040
63 x 25	ABSFRC100630025
63 x 32	ABSFRC100630032
63 x 50	ABSFRC100630050
75 x 63	ABSFRC100750063
90 x 50	ABSFRC100900050
90 x 63	ABSFRC100900063
90 x 75	ABSFRC100900075
110 x 63	ABSFRC101100063
110 x 90	ABSFRC101100090
125 x 110	ABSFRC101250110
140 x 125	ABSFRC101400125
160 x 90	ABSFRC101600090
160 x 110	ABSFRC101600110
160 x 140	ABSFRC101600140
200 x 160	ABSFRC102000160
225 x 160	ABSFRC102250160
225 x 200	ABSFRC102250200
250 x 225	ABSFRC102500225
315 x 250	ABSFRC103150250

90°SWEPT TEES	
ABSF-TST	
dia	CODE
32	ABSF-TST0032
50	ABSF-TST0050
63	ABSF-TST0063
110	ABSF-TST0110

HOSE ADAPTOR	
ABSF-PO1	
dia	CODE
16	ABSFPO10016
20	ABSFPO10020
25	ABSFPO10025
32	ABSFPO10032


SOCKETS PLAIN	
ABSF MA1	
dia	CODE
16	ABSFMA10016
20	ABSFMA10020
25	ABSFMA10025
32	ABSFMA10032
40	ABSFMA10040
50	ABSFMA10050
63	ABSFMA10063
75	ABSFMA10075
90	ABSFMA10090
110	ABSFMA10110
125	ABSFMA10125
140	ABSFMA10140
160	ABSFMA10160
200	ABSFMA10200
225	ABSFMA10225
250	ABSFMA10250
315	ABSFMA10315

45° ELBOW PLAIN	
ABSF GY1	
dia	CODE
16	ABSF GY10016
20	ABSF GY10020
25	ABSF GY10025
32	ABSF GY10032
40	ABSF GY10040
50	ABSF GY10050
63	ABSF GY10063
75	ABSF GY10075
90	ABSF GY10090
110	ABSF GY10110
125	ABSF GY10125
140	ABSF GY10140
160	ABSF GY10160
200	ABSF GY10200
225	ABSF GY10225
250	ABSF GY10250
315	ABSF GY10315


90° ELBOWS	
ABSF GO1	
dia	CODE
16	ABSF GO10016
20	ABSF GO10020
25	ABSF GO10025
32	ABSF GO10032
40	ABSF GO10040
50	ABSF GO10050
63	ABSF GO10063
75	ABSF GO10075
90	ABSF GO10090
110	ABSF GO10110
125	ABSF GO10125
140	ABSF GO10140
160	ABSF GO10160
200	ABSF GO10200
225	ABSF GO10225
250	ABSF GO10250
315	ABSF GO10315


ABS PIPES & FITTINGS - PN10




REDUCING TEE	
	
ABSF TR1	
d x d	CODE
25 X 20	ABSFTR100250020
32 X 20	ABSFTR100320020
32 X 25	ABSFTR100320025
40 X 20	ABSFTR100400020
40 X 25	ABSFTR100400025
50 X 20	ABSFTR100500020
50 X 25	ABSFTR100500025
50 X 32	ABSFTR100500032
63 X 25	ABSFTR100630025
63 X 32	ABSFTR100630032
75 X 32	ABSFTR100750032
75 X 40	ABSFTR100750040
75 X 50	ABSFTR100750050
75 X 63	ABSFTR100750063
90 X 40	ABSFTR100900040
90 X 50	ABSFTR100900050
90 X 63	ABSFTR100900063
90 X 75	ABSFTR100900075
110 X 50	ABSFTR101100050
110 X 63	ABSFTR101100063
110 X 75	ABSFTR101100075
110 X 90	ABSFTR101100090


MALE THREAD ADAPTOR	
	
ABSF AM3	
d x d x BSP	CODE
16 X 12 X 3/8"	ABSFAM3001600120375
20 X 16 X 3/8"	ABSFAM3002000160375
20 X 16 X 1/2"	ABSFAM300200020160500
25 X 20 X 1/2"	ABSFAM30025002020050
25 X 20 X 3/4"	ABSFAM300250020200750
32 X 25 X 3/4"	ABSFAM3003202502050750
32 X 25 X 1"	ABSFAM300320250251000
40 X 32 X 1"	ABSFAM3004000321000
40 X 32 X 1,1/4"	ABSFAM3004000321250
50 X 40 X 1,1/4"	ABSFAM3005000401250
50 X 40 X 1,1/2"	ABSFAM3005000401500
63 X 50 X 1,1/2"	ABSFAM3006300501500
63 X 50 X 2"	ABSFAM3006300502000
75 X 63 X 2"	ABSFAM3007500632000


CAP THREAD	
	
ABSF CA2	
BSP	CODE
3/8"	ABSFCA20375
1/2"	ABSFCA20500
3/4"	ABSFCA20750
1"	ABSFCA21000
1 1/4"	ABSFCA21250
1 1/2"	ABSFCA21500
2"	ABSFCA22000
3"	ABSFCA23000


90° ELBOW THREAD	
	
ABSF GO2	
BSP	CODE
1/2"	ABSFGO20500
3/4"	ABSFGO20750
1"	ABSFGO21000
1 1/2"	ABSFGO21500
2"	ABSFGO22000


STUB FLANGE	
	
ABSF QR1	
d x d	CODE
16	ABSFQR10016
20	ABSFQR10020
25	ABSFQR10025
32	ABSFQR10032
40	ABSFQR10040
50	ABSFQR10050
63	ABSFQR10063
75	ABSFQR10075
90	ABSFQR10090
110	ABSFQR10110
125	ABSFQR10125
140	ABSFQR10140
160	ABSFQR10160
200	ABSFQR10200
225	ABSFQR10225
250	ABSFQR10250
315	ABSFQR10315


FEMALE THREAD ADAPTOR	
	
ABSF AF3	
d x d x BSP	CODE
16 X 12 X 3/8"	ABSF AF3001600120375
20 X 16 X 1/2"	ABSF AF3002000160500
25 X 20 X 3/4"	ABSF AF3002500200750
32 X 25 X 1"	ABSF AF3003200251000
40 X 32 X 1,1/4"	ABSF AF3004000321250
50 X 40 X 1,1/2"	ABSF AF3005000401500
63 X 50 X 2"	ABSF AF3006300502000


BLANK FLANGE	
	
16/13 ABSF FC1	
d x d	CODE
32	ABSF FC10032
40	ABSF FC10040
50	ABSF FC10050
63	ABSF FC10063
75	ABSF FC10075
90	ABSF FC10090
110	ABSF FC10110
125	ABSF FC10125
140	ABSF FC10140
160	ABSF FC10160


THREAD PLUG	
	
ABSF TA2	
BSP	CODE
3/8"	ABSF TA20375
1/2"	ABSF TA20500
3/4"	ABSF TA20750
1"	ABSF TA21000
1 1/4"	ABSF TA21250
1 1/2"	ABSF TA21500
2"	ABSF TA22000


HOSE ADAPTOR	
	
ABSF PO2	
G	CODE
1/2"	ABSF PO20500
3/4"	ABSF PO20750
1"	ABSF PO21000

CAP PLAIN	
	
ABSF CA1	
d x d	CODE
16	ABSF CA10016
20	ABSF CA10020
25	ABSF CA10025
32	ABSF CA10032
40	ABSF CA10040
50	ABSF CA10050
63	ABSF CA10063
75	ABSF CA10075
90	ABSF CA10090
110	ABSF CA10110

SOCKET UNION PLAIN	
	
EPDM SEALS FPM/VITON SEALS AVAILABLE ABSF-BO1-E	
d x d	CODE
16	ABSF BO10016
20	ABSF BO10020
25	ABSF BO10025
32	ABSF BO10032
40	ABSF BO10040
50	ABSF BO10050
63	ABSF BO10063
75	ABSF BO10075
90	ABSF BO10090
110	ABSF BO10110

INCH/METRIC (THREADED/PLAIN) SOCKET ADAPTORS	
	
ABSF MIL	
d x BSP	CODE
20 X 1/2"	ABSF MIL00200500
25 X 3/4"	ABSF MIL00250750
32 X 1"	ABSF MIL00321000
40 X 1 1/4"	ABSF MIL00401250
50 X 1 1/2"	ABSF MIL00501500
63 X 2"	ABSF MIL00632000
90 X 3"	ABSF MIL00903000
110 X 4"	ABSF MIL01104000
160 X 6"	ABSF MIL01606000


SOCKET THREAD	
	
ABSF MA2	
BSP	CODE
0.5"	ABSF MA20500
3.4"	ABSF MA20750
1"	ABSF MA21000
1,1/4"	ABSF MA21250
1,1/2"	ABSF MA21500
2"	ABSF MA22000
3"	ABSF MA23000

NIPPLE HEX NUT THREAD	
	
ABSF NI2	
BSP	CODE
3/8"	ABSF NI20375
1/2"	ABSF NI20500
3/4"	ABSF NI20750
1"	ABSF NI21000
1 1/4"	ABSF NI21250
1 1/2"	ABSF NI21500
2"	ABSF NI22000

ABS VALVES & ACCESSORIES




FK BUTTERFLY VALVE
BODY GLASS REINFORCED
POLYPROPYLENE WITH
ABS DISC
VALF- FKOALM-EPDM LINER




d	COVER
75	VALFFKOALM0075E
90	VALFFKOALM0090E
110	VALFFKOALM0110E
140	VALFFKOALM0140E
160	VALFFKOALM0160E
225	VALFFKOALM0225E

VKD DOUBLE UNION BALL
VALVE
VKDIA PLAIN EPDM SEALS




d	CODE
16	VALFVKDIA0016E
20	VALFVKDIA0020E
25	VALFVKDIA0025E
32	VALFVKDIA0032E
40	VALFVKDIA0040E
50	VALFVKDIA0050E
63	VALFVKDIA0063E
75	VALFVKDIA0075E
90	VALFVKDIA0090E
110	VALFVKDIA0110E

DIAPHRAGM VALVE
EPDM PLAIN END
VALF VMDA



d	CODE
20	VALFVMDA0020E
25	VALFVMDA0025E
32	VALFVMDA0032E
40	VALFVMDA0040E
50	VALFVMDA0050E
63	VALFVMDA0063E
75	VALFVMDA0075E
90	VALFVMDA0090E
110	VALFVMDA0110E


SOLVENT CEMENT



ABSF CEME

ML	CODE
0500	CEMEOATEY0500ABS
1000	CEMEOATEY1000ABS

THIS IS ABS CEMENT AND CLEANER



CEMEABS0500

ABS SOLV . 1/2L

CEMEABS0500ECO

DURAPIPE ABS ECO CLEANER 500ML

FOR PTFE TAPE PLEASE REFER TO PAGE 10
FOR TANK CONNECTORS PLEASE REFER TO PAGE 10